

Table of Contents

I(2) Drive WebDAV Server Help

[Introducing I\(2\) Drive WebDAV Server](#)

[Setting up I\(2\) Drive WebDAV Server](#)

[Windows XP](#)

[Windows 2000](#)

[Windows 98](#)

[Mac OS X](#)

[Mac OS 9.x](#)

[Linux](#)

[Adobe Photoshop and Illustrator](#)

[Macromedia Dreamweaver](#)

[Secure Socket Layer \(SSL\)](#)

Introducing I(2) Drive WebDAV Server

I(2) Drive provides personal and corporate storage solutions that help people manage their important information from anywhere. I (2) Drive services are the preferred method for users sharing, transporting, storing and backing-up their critical data.

I(2) Drive is also the leading provider of storage solutions for companies, including managed server solutions, file management and data storage.

I(2) Drive WebDAV Server is a service provided for I(2) Drive members. This help file provides information about [Setting up I\(2\) Drive WebDAV Server](#) to connect to your I(2) Drive account from various operating systems and software tools. If you do not have an I(2) Drive account, you may sign up for one at www.i2drive.com

Setting up I(2) Drive WebDAV Server

Here are the instructions for the following operating systems and some software tools. If you need instruction for other software, please contact our support team at: support@i2drive.com

[Windows XP](#)

[Windows 2000](#)

[Windows 98](#)

[Mac OS X](#)

[Mac OS 9.x](#)

[Linux](#)

[Adobe Photoshop and Illustrator](#)

[Macromedia Dreamweaver](#)

Windows XP

On Windows XP there are two possible way of connecting to your account. One option is to create and map a drive letter to your account and another option is to create a web folder connection.

Option A: Setting up I(2) Drive WebDAV Server on Windows XP via a mapped drive

1. From the start menu go to "Programs", "Accessories" and select "Command Prompt"
2. At the command prompt write the following:

```
net use i: "http://webdav.i2drive.com/I2 Drive" /User:Username Password
```

Replace username and password with your account information. After this hit enter and you should see this message *"The command completed successfully"*.

Now you can open Explorer and you should see the i: drive.

Note: If you like to use any other drive letter replace *i:* with another letter.

Option B: Setting up I(2) Drive WebDAV Server on Windows XP via Web Folders

1. Minimize or close your browser.
2. Double-click the My Computer icon on your desktop.
3. Double-click the My Network Places icon that appears on the left set of options.
4. From the Network Tasks menu on the left, click Add Network Place. This will open the Add Network Place Wizard.

5. The Add Network Place Wizard opens. Click Next.
6. At the next step of the Wizard, you are asked where you want to create this network place. Click on "Choose another network location" and then click Next.
7. You will be prompted for the Internet address of your I(2) Drive WebDAV Server. Enter <http://webdav.i2drive.com>
8. Then click the Next button.
9. Enter your I(2) Drive account login name and password. Optionally select the "Remember password" check box and Click OK.
10. Enter a name for the folder that will help you easily identify this network place and then click Next.
11. Click the Finish button. You will be prompted for your username and password once more and as the Wizard completes the setup, the Web folder for your I(2) Drive account will open.

Trouble shooting and some notes:

- Your account must have WebDAV included if you have the "Basic personal account" you must upgrade to atleast the "Basic personal with WebDAV" level.
- Please Please make sure that you get the latest updates for your Windows. If you still had problems you can perform the following steps to reinstall your Winodws XP build-in web client:
- Some people have reported problems setting up WebDAV on Windows XP.
 1. From the Start menu select "Run..."

2. Enter C:\windows\system32\webfldrs.msi
 3. Click "Select reinstall mode."
 4. Uncheck "Repair all detected reinstall problems."
 5. Check the last four options beginning with "Force all files ..." and ending with "Validate shortcuts."
 6. Click OK.
 7. Click Reinstall.
- If you still had problem go to this site for some helpfull hints about your web folder or the mini redirector versions of your Windows XP and ways of fixing them.

For web folder:

<http://www.greenbytes.de/tech/webdav/webfolder-client-list.html>

For Mini-Redirector:

<http://www.greenbytes.de/tech/webdav/webdav-redirector-list.html>

- Of course you may contact us for support anytime.

Windows 2000

Setting up I(2) Drive WebDAV Server on Windows 2000:

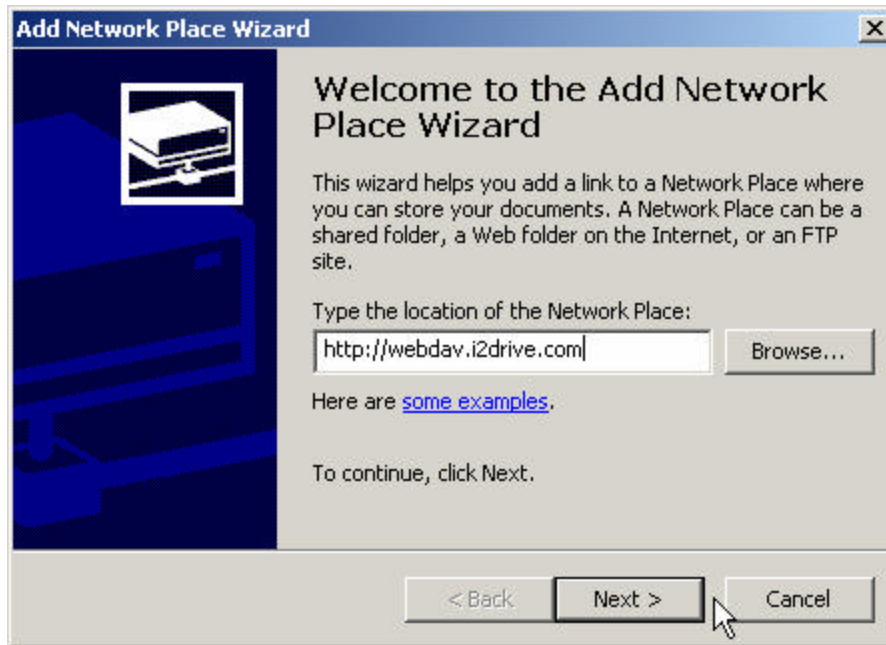
1. Double Click on the "My Network Places" on your desktop

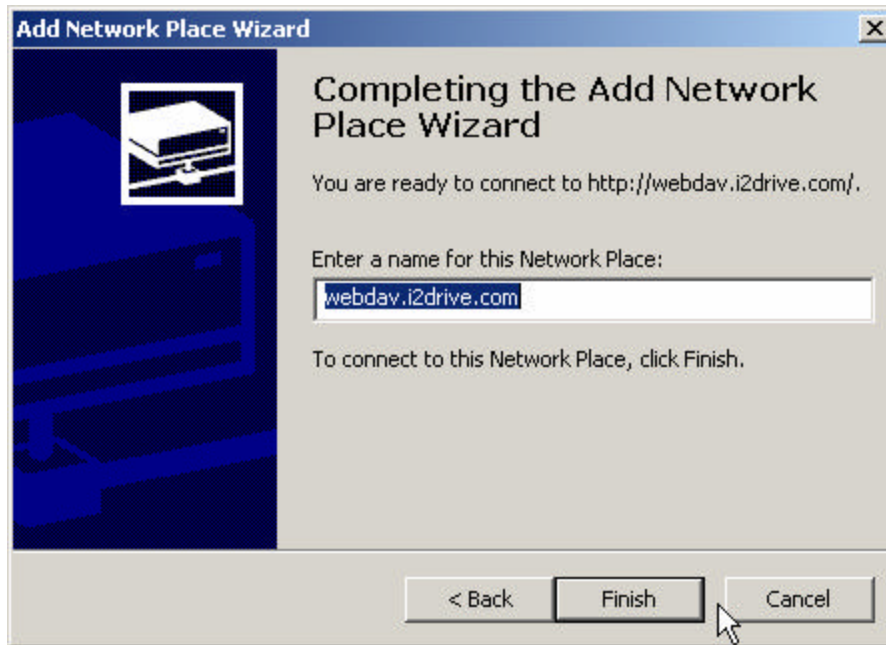


2. Double Click on the icon that says "Add Network Place."

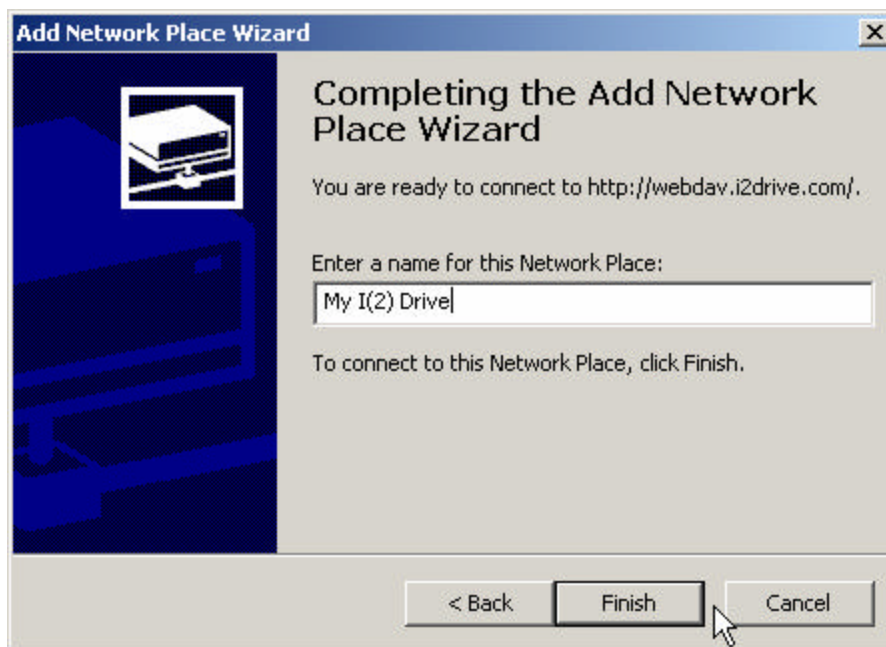


3. A window opens. At the "Type the location of the Network Place" type the URL <http://webdav.i2drive.com> and click on "Next."

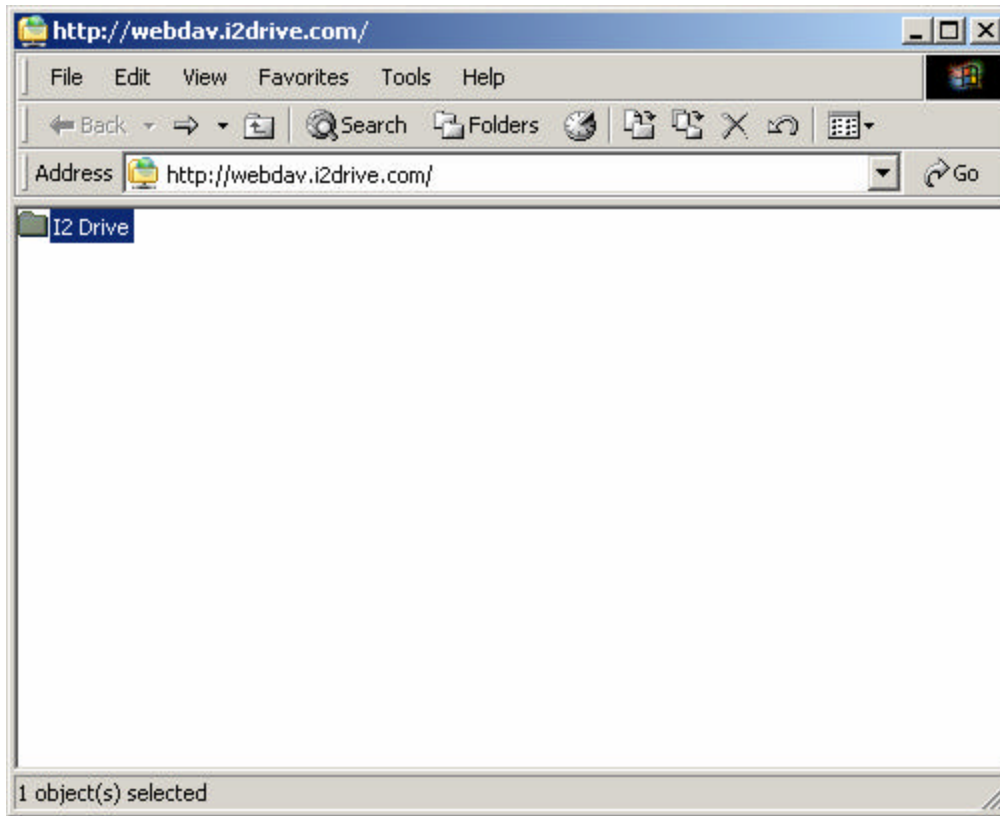




6. Click on "Finish".



7. You can then open your I(2) Drive from My Network Place on your desktop. You will be prompted one more time for your username/password.



Windows 98

Setting up I(2) Drive WebDAV Server on Windows 98

1. Double click on the "My Computer" icon on your desktop.
2. Double click on "Web Folders"
3. Double click on "Add Web Folder"
4. At the "Type the location to Add" prompt enter the URL <http://webdav.i2drive.com> and Click on "Next"
5. It will prompt you for your username and password. At the "Username" prompt enter your I(2) Drive account login name. At the "Password" prompt enter your I(2) Drive account password.
6. At the "Enter Name for the Web Folder" prompt, you may enter an alias for your web folder.
7. Click on "Finish".
8. You should see your I(2) Drive web folder.

Mac OS X

Setting up I(2) Drive WebDAV Server on Mac OS X

1. Go to the Finder.
2. Press Command-K or choose "Connect to Server..." from the "Go" menu.
3. In the Address box enter the URL <http://webdav.i2drive.com> Then click "Connect".
4. It will prompt you for your username and password. Enter your I(2) Drive account login name and password.
5. The I(2) Drive WebDAV Server will be mounted on your desktop and you can use it like you would any other drive.

Mac OS 9.x

Setting up I(2) Drive WebDAV Server on Mac OS 9.x

To create a WebDAV connection on Mac OS 9.x , you will need to download a free software package called Goliath.

A. To Download:

1. Go to <http://www.webdav.org/goliath/#download>

B. To Install:

1. Double click on the "Goliath" Installer.
2. A dialog box opens giving information about the product.
3. Click any where on the box to continue.
4. You will be prompted through the installation process.

C. To Setup:

1. Open Goliath by double clicking on the icon.
2. A dialog box opens. Enter the URL <http://webdav.i2drive.com>
3. Check the box next to "Use basic authentication".
4. It will prompt you for your username and password.
5. Enter your I(2) Drive account login name and password.

Linux

Setting up I(2) Drive WebDAV Server with davfs2 on Linux

1. Download and install the latest davfs2 Linux file system driver from <http://dav.sourceforge.net>

2. Create the mount point

```
mkdir /i2drive
```

3. Remote file systems should not be indexed, so you should exclude the /i2drive directory from the updatedb command:

edit /etc/cron.daily/slocate.cron and add the /i2drive directory in the list of exclude (the list after the -e option):

```
/usr/bin/updatedb -f "nfs,smbfs,ncpfs,proc,devpts" -e  
"/tmp,/var/tmp,/usr/tmp,/afs,/net,/i2drive"
```

4. Mount the I(2) Drive WebDAV Server

```
/usr/local/sbin/mount.davfs http://webdav.i2drive.com/ /i2drive  
-o username=<your_login>,password=<your_passwd>
```

5. You can now access your I(2) Drive from any application using the /i2drive mount point! You can cd to /i2drive and list files.

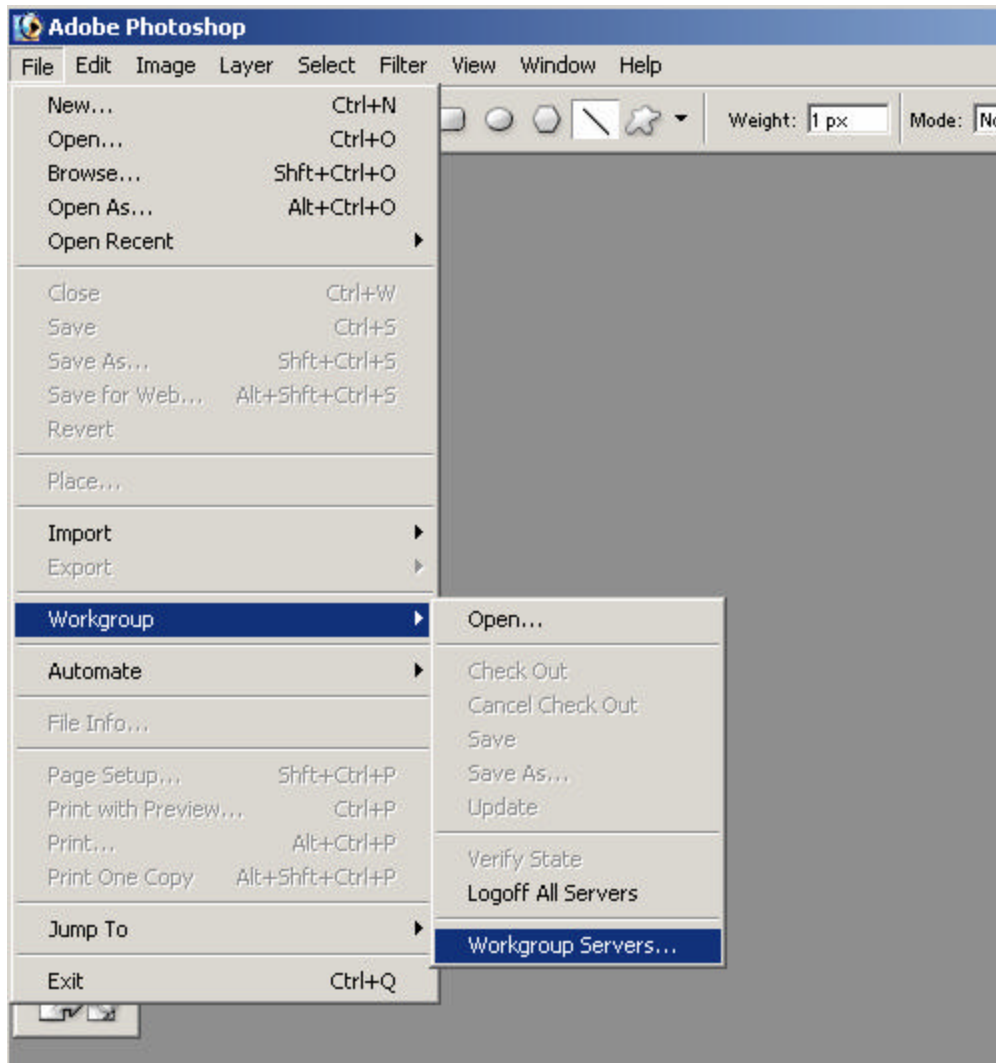
6. Unmount when finished.

```
umount /i2drive
```

Adobe Photoshop or Illustrator

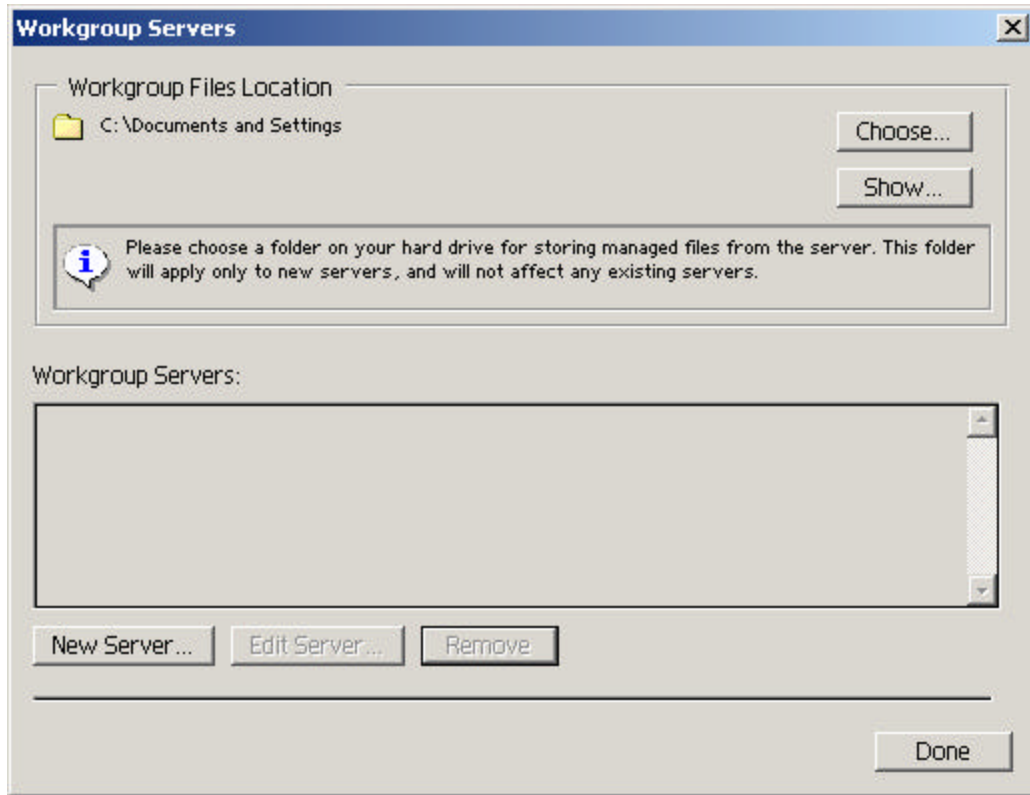
Setting up I(2) Drive WebDAV Server with Adobe Photoshop. For Adobe Illustrator this works too and is very similar:

1. Choose File > Workgroup > Workgroup Servers.



2. Specify a folder in which you want to store local copies of managed files. To change the default location, click Choose, and specify a different folder. Click Show to locate a folder in the Windows Explorer or the Mac

OS Finder. Note: The path you choose here is used for all servers you want to add. Changing this path does not change the location of files on existing servers.



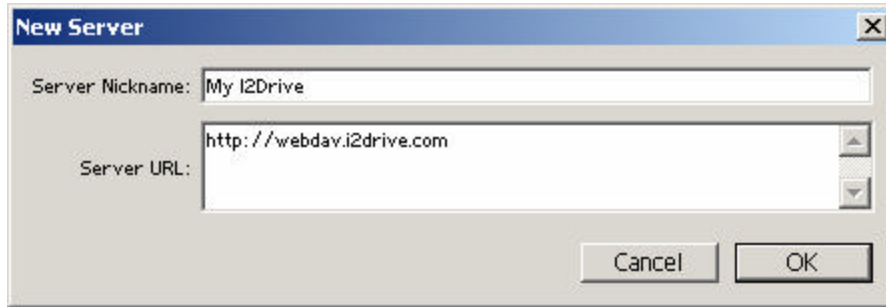
3. Select the WebDAV server you want to use, or do one of the following:

To add a new server to the list, click New Server, specify a unique server nickname and URL, and click OK.

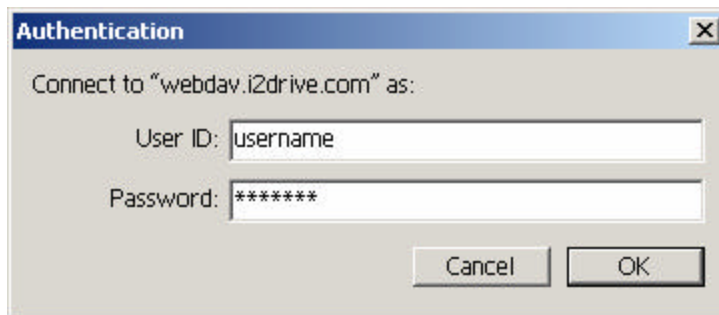
To edit a server in the list, click Edit Server. To view the folder where local copies of managed files are stored, click Advanced Options, then click Show.

To remove a server from the list, click Remove, and then click OK to the warning message.

Click Done.



4. Enter your I(2) Drive username and password



To set Workgroup management preferences:

1. Do one of the following:

In Windows and Mac OS 9.x, choose Edit > Preferences > File Handling.

In Mac OS X, choose Photoshop > Preferences > File Handling.

2. Do one of the following:

To show the Workgroup pop-up menu at the bottom of the application window (Windows) or document window (Mac OS), select Enable Workgroup functionality.

To hide the Workgroup pop-up menu, deselect Enable Workgroup functionality.

3. Select one of the following options for Check Out from Server:

Never to open the local copy of the file without displaying a dialog box and without checking it out.

Always to automatically check out the file when you open it.

Ask to display a dialog box when you open a file that is not checked out.

4. Select one of the following options for Update from Server:

Never to open the local copy of the file without displaying a dialog box and without downloading the latest version of the file from the server.

Always to automatically download the latest version of the file from the server.

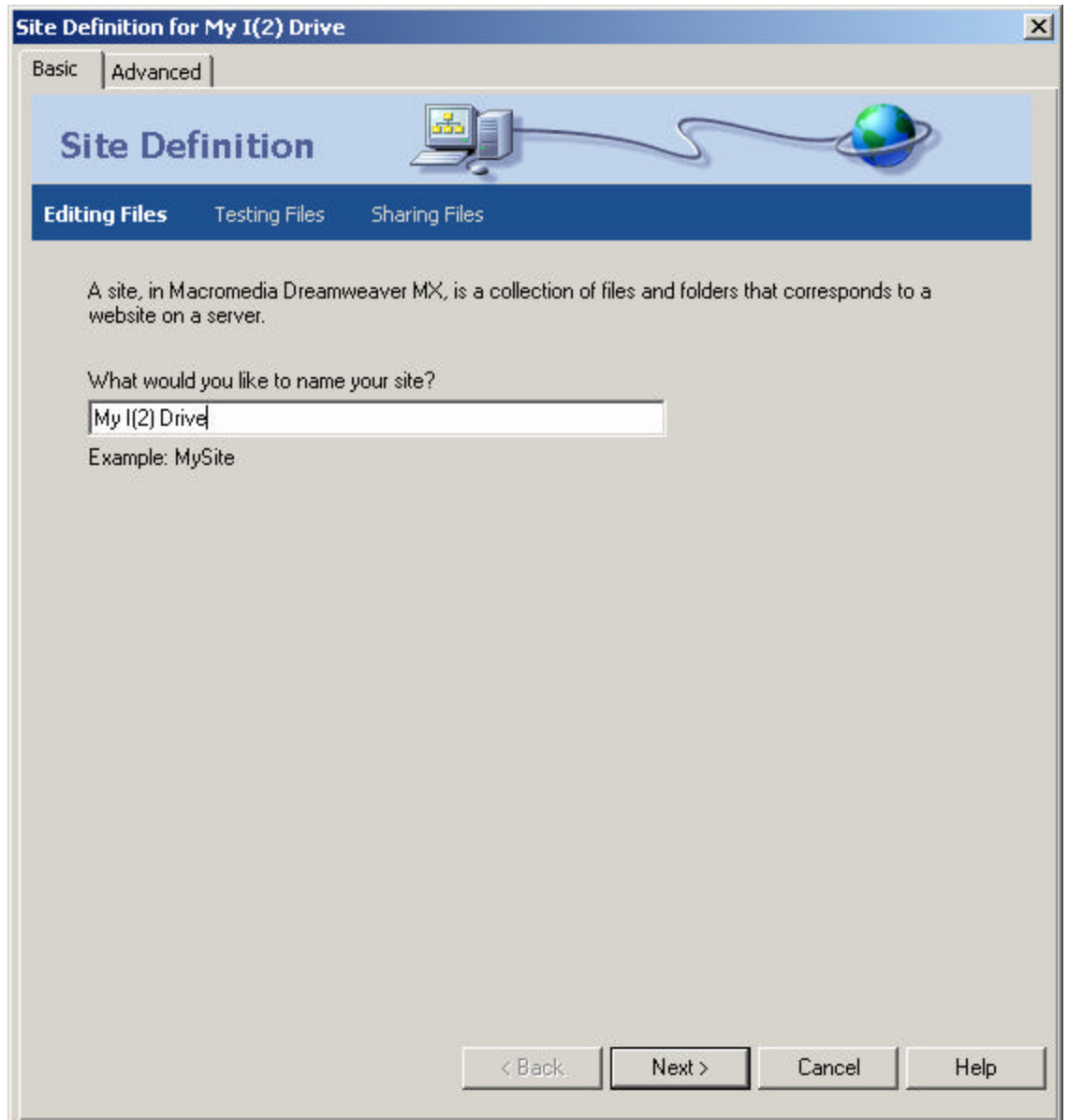
Ask to display a dialog box asking if you want to download the latest version.

Macromedia Dreamweaver

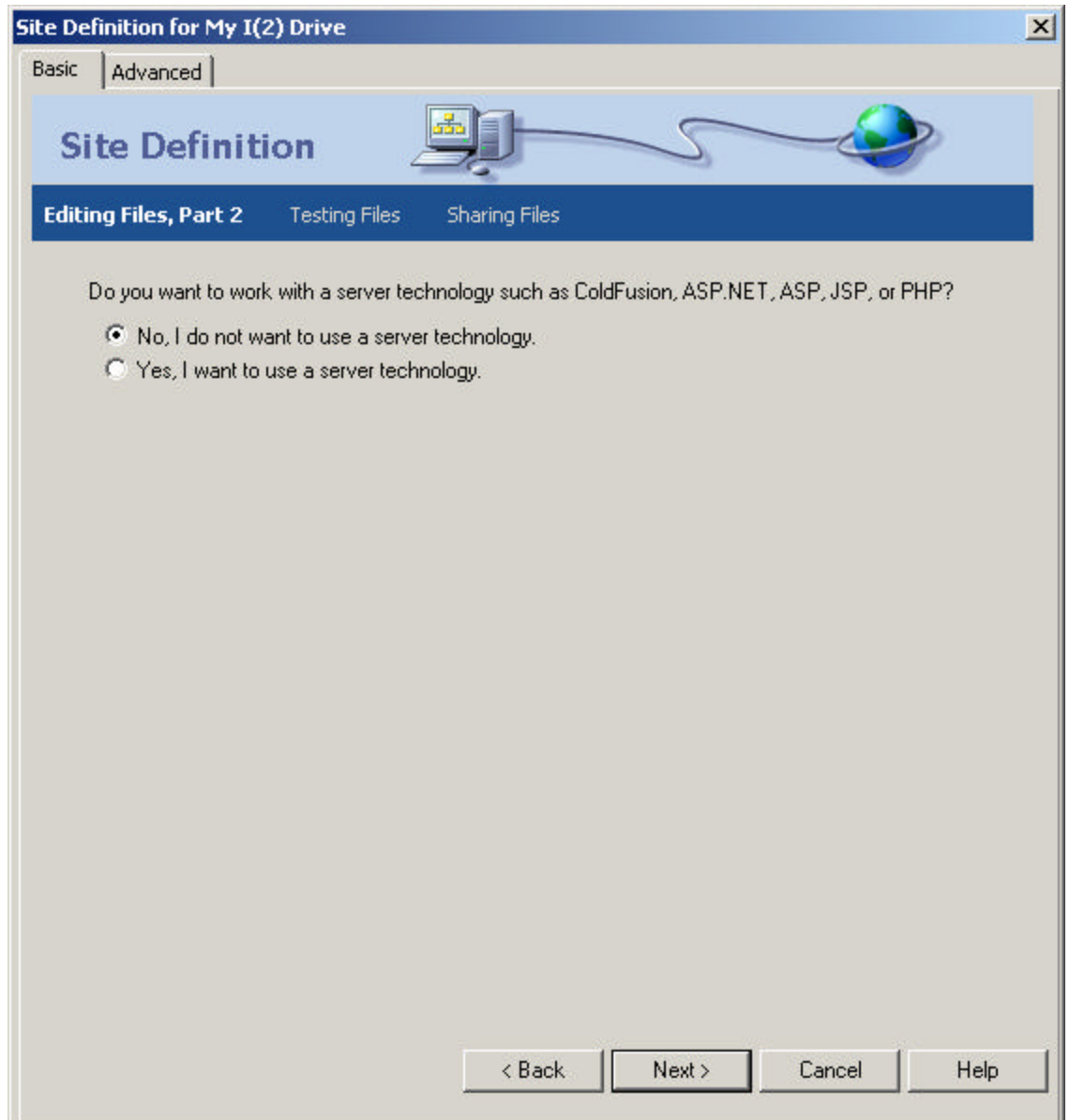
Setting up I(2) Drive WebDAV Server with Dreamweaver:

A) To Create a new site in Dreamweaver:
Dreamweaver has a setup wizard that takes you through the setup process.

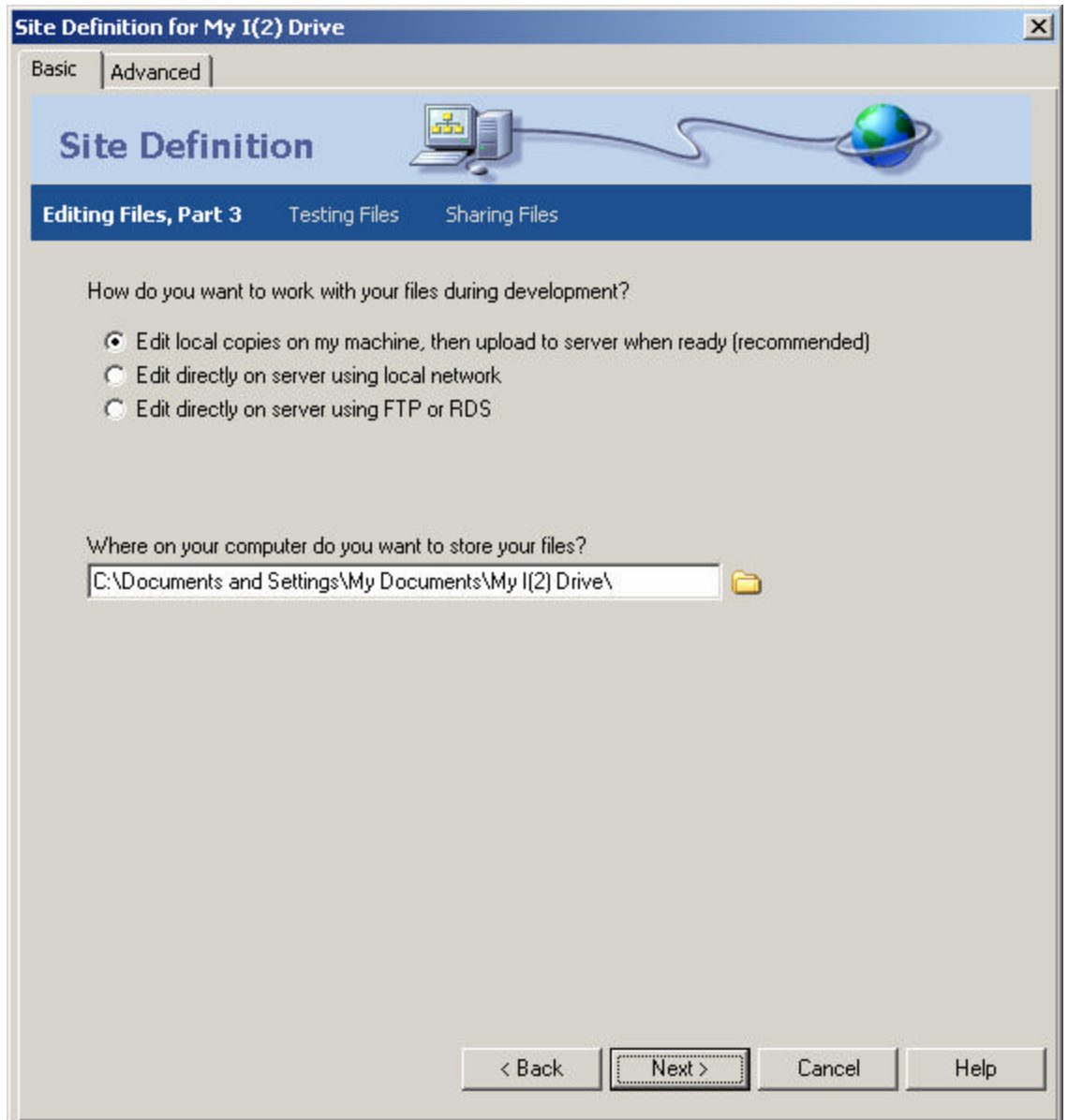
1. Enter a display name.



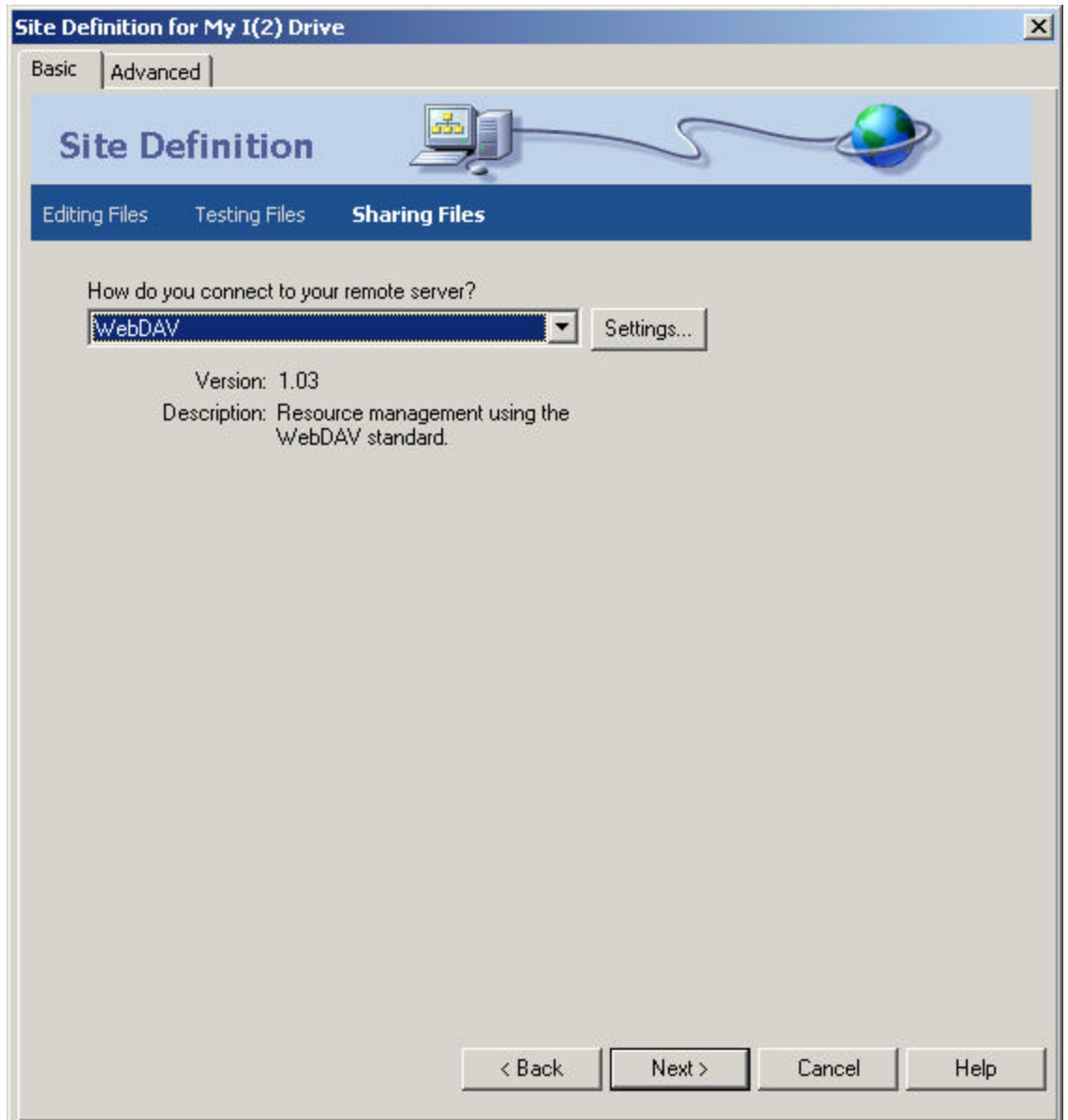
2. Choose server technology option if you like.



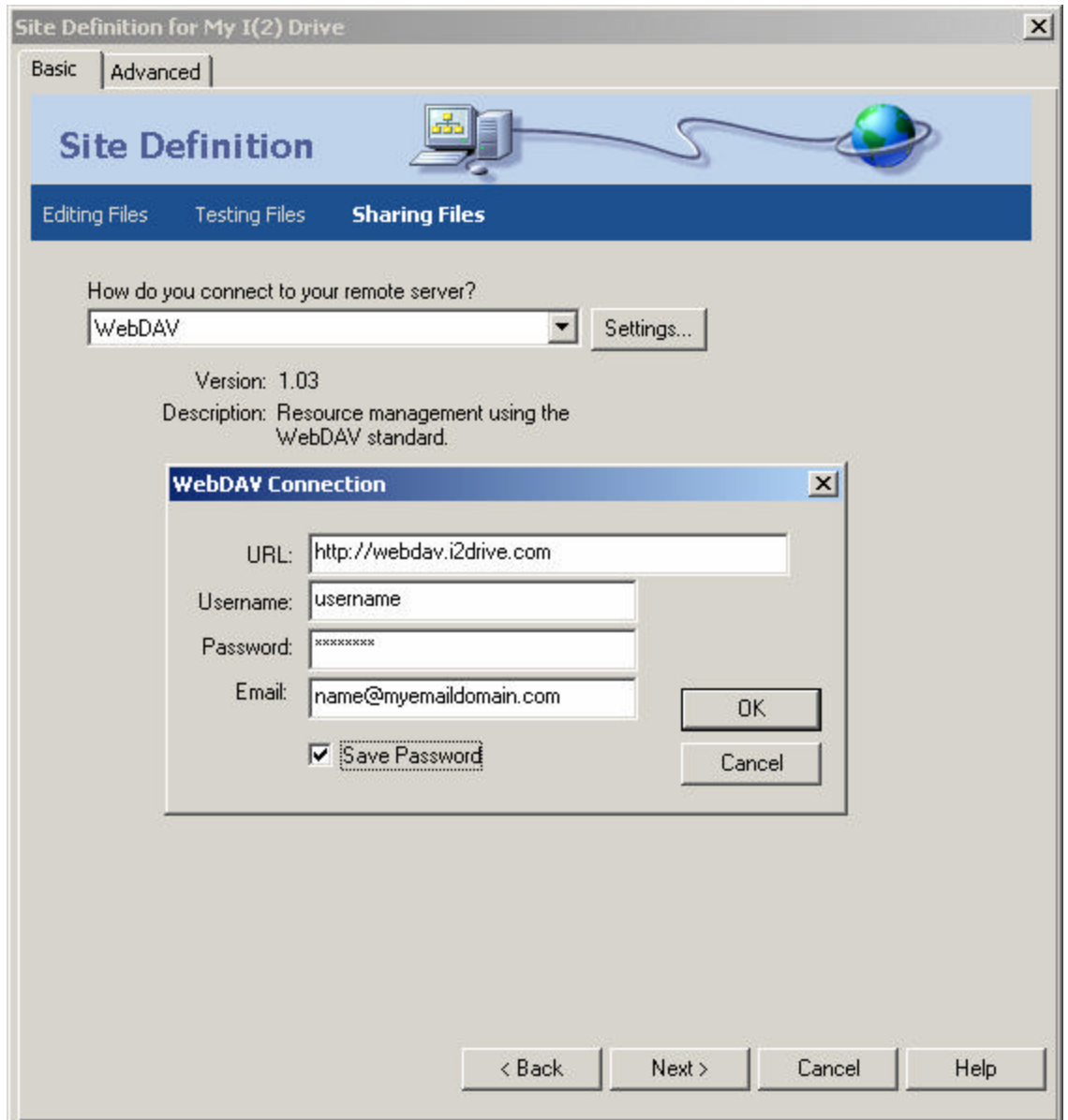
3. Choose the first option to have copies of the your files both on I(2) Drive Server as well as your computer.



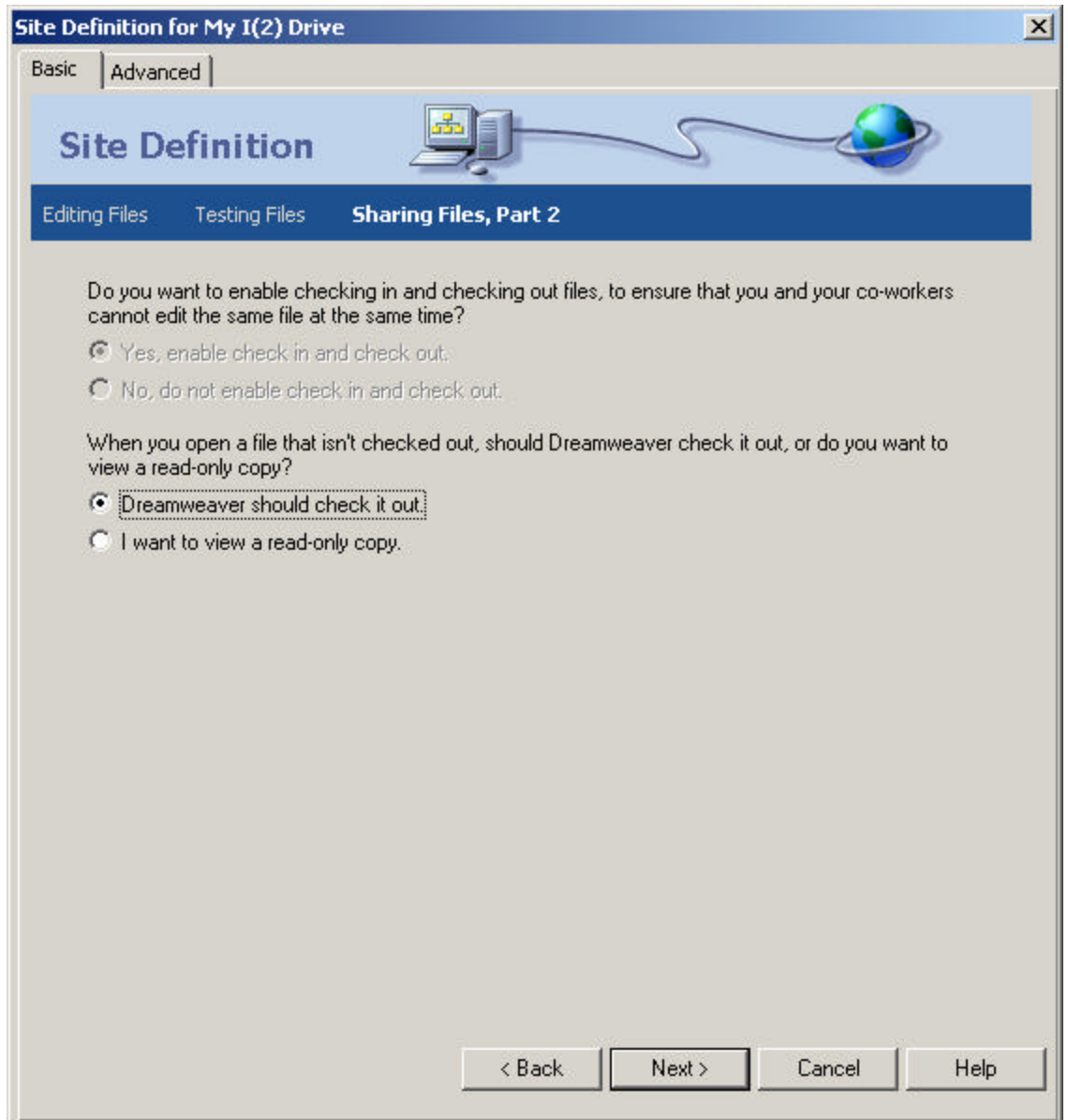
4. Select WebDAV as your remote server option. and Click on Settings...



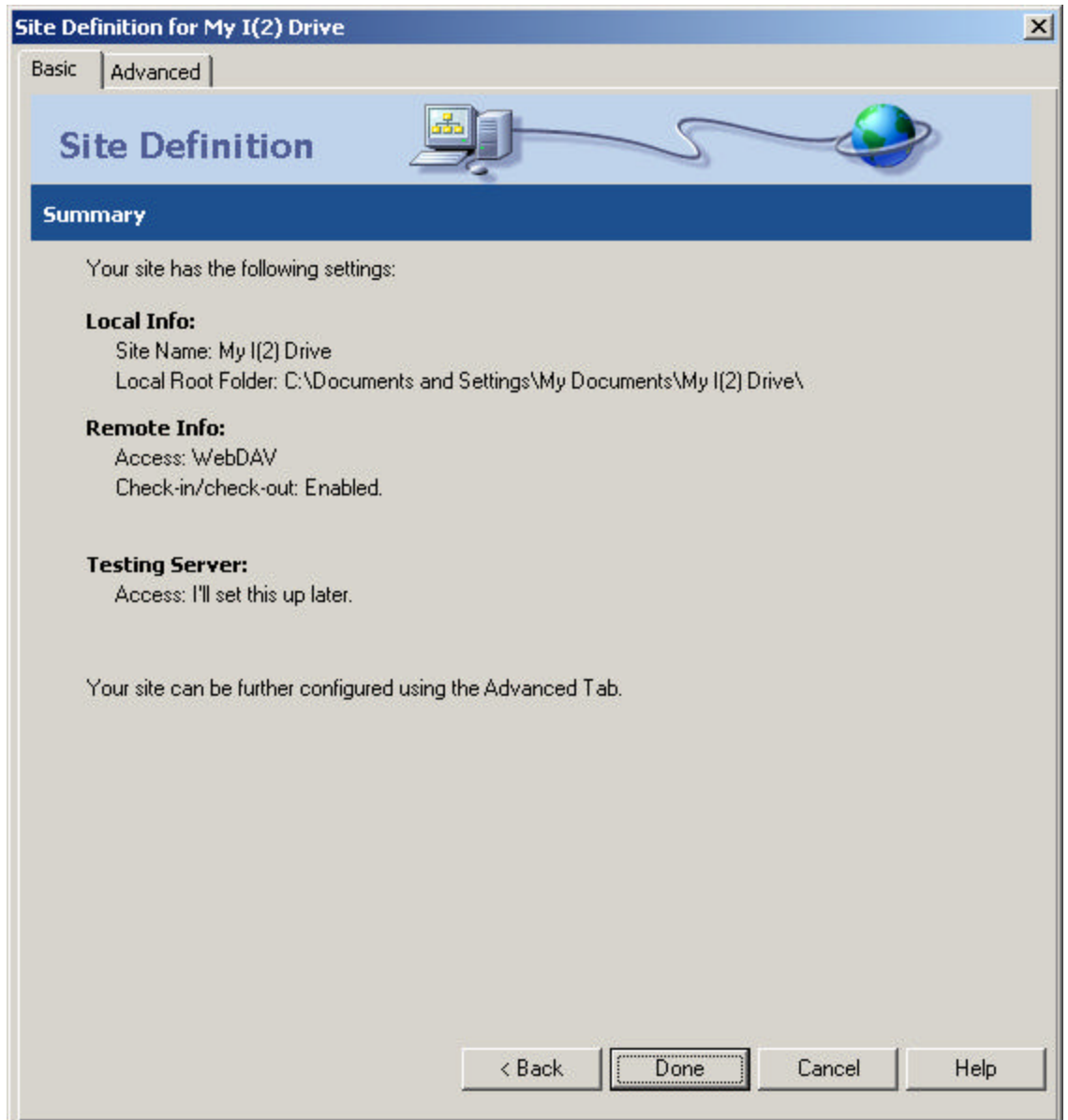
5. Enter `http://webdav.i2drive.com` as well as your username, password, and email address.



6. You may select to enable check-in/checkout. I(2) Drive WebDAV Server dose support file Locking.



7. Finally review everything and click Done.



8. To connect to I(2) Drive WebDAV Server, In the Site panel, choose Site > Connect or click the Connect to Remote Host button on the Site panel toolbar.

B. If you have setup an existing site then do the following to create a connection to I(2) Drive WebDAV Server.

Choose Site > Edit Sites.

1. The Edit Sites dialog box appears.
2. Select an existing Dreamweaver site.
3. Click Edit.

The Site Definition dialog box appears.

4. Click the Advanced button if Dreamweaver displays the Site Definition Wizard.
5. Select Remote Info from the Category list on the left.
6. Choose WebDAV access option.
7. Click Settings...
8. Enter your I(2) Drive account information

To connect to a remote folder:

In the Site panel, choose Site > Connect or click the Connect to Remote Host button on the Site panel toolbar.

To disconnect from a remote folder:

In the Site panel, choose Site > Disconnect or click the Disconnect button on the Site panel toolbar.

Secure Socket Layer (SSL)

For secure connection and transfer of files you may use our secure server version at: [*https://securedav.i2drive.com*](https://securedav.i2drive.com)

What the https (SSL) does is it encrypts your files during transfer. This makes it just a little slower because each file is encrypted before and after send/receive. But of course more secure.

In addition to SSL we use MD5 digest for authentication. We also do this for each request/response. This encrypts your username/password based on a key that is send and decrypted at our server again.

At the first use of https, you would need to install the certificate. When you see the popup windows click on "View Certificate" button than click on "Install certificate" You would only need to do this once. After that you can setup your account.

